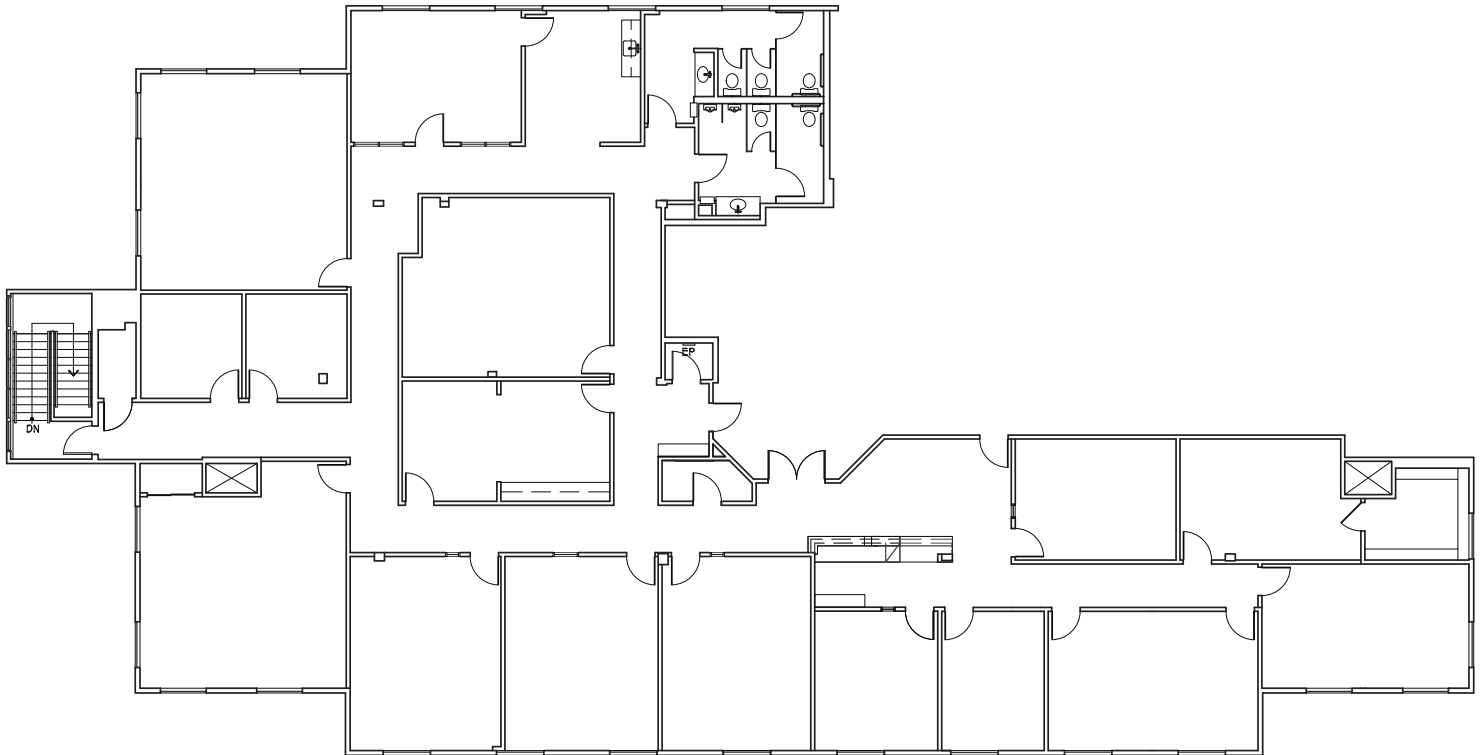
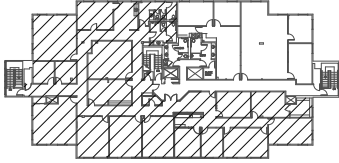


# OFFICE / MEDICAL FOR LEASE

TORRANCE BOULEVARD / MADRONA AVENUE



**3528 Torrance Blvd.**  
Torrance, CA 90503

**SUITE 304**  
SCALE: N.T.S.  
DATE: 07-08-2020  
8,194 RSF

Corporate License #01355491. The information contained herein has been obtained from sources deemed reliable but has not been verified and no guarantee, warranty or representation, either express or implied, is made with respect to such information. Terms of sale or lease and availability are subject to change or withdrawal without notice.

NEWMARK

