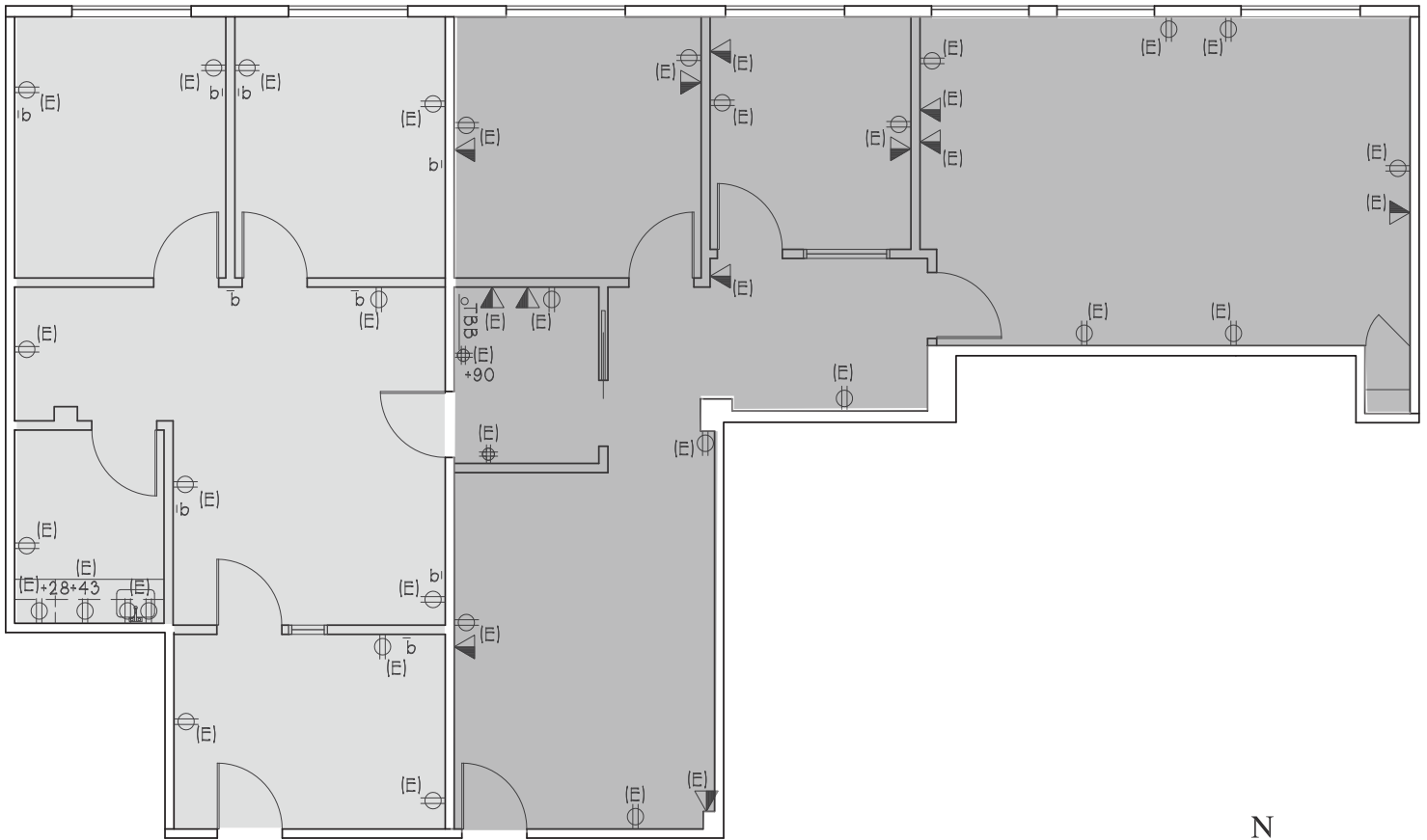


OFFICE / MEDICAL FOR LEASE

TORRANCE BOULEVARD / MADRONA AVENUE



Suite 212: 836 SF

Suite 209: 1,194 SF



3510 Torrance Blvd.
Torrance, CA 90503

SUITES 212/209

SCALE: 1/8"=1'-0"

DATE: 08-28-17

2,030 RSF

The information contained herein has been obtained from sources deemed reliable but has not been verified and no guarantee, warranty or representation, either express or implied, is made with respect to such information. Terms of sale or lease and availability are subject to change or withdrawal without notice.

NEWMARK

